

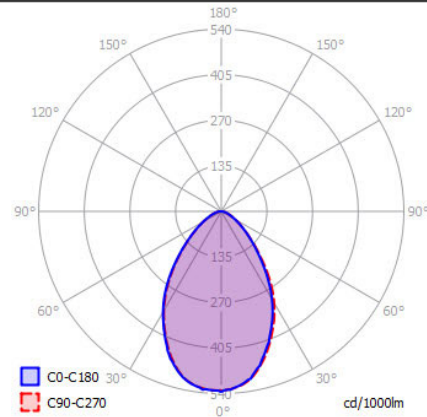
STRATO 230

SPECIFICATIONS

MOUNTING		CEILING RECESSED
POWER	[W]	21
LAMP		built-in LED
LUMINOUS FLUX*	[lm]	2160
LIGHT COLOUR	[K]	3000
CRI		>90
BEAM ANGLE	[°]	-
AVERAGE LIFETIME	[h]	L80/B50.000
LUMINOUS EFFICACY	[lm/W]	102
POWER SUPPLY	[V] [A]	220-240V AC 50/60 Hz
LED-DRIVER		INCLUDED
DIMMING		NO
THROUGH-WIRING		NO
MATERIAL		ALUMINUM
INGRESS PROTECTION		IP44
PROTECTION CLASS		III
NET WEIGHT	[kg]	0,86
GROSS WEIGHT	[kg]	0,90
COLOUR (HOUSING)		WHITE ~RAL9003
CUT-OUT	[mm]	Ø215
RECESSED DEPTH (H)	[mm]	95



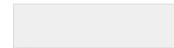
LIGHT DISTRIBUTION



*Luminous flux values are nominal LED data at a operating temperature of 25° C

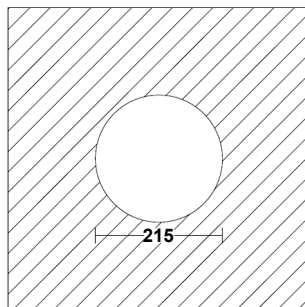
OPTIONS / OPTIONAL ACCESSORIES

Colours

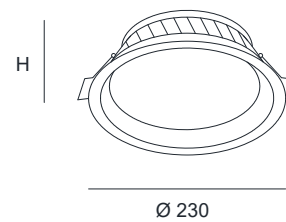


white

CUT OUT DIMENSIONS



FIXTURE DIMENSIONS



DLS LIGHTING

www.dslighting.com

*DLS
LIGHTING